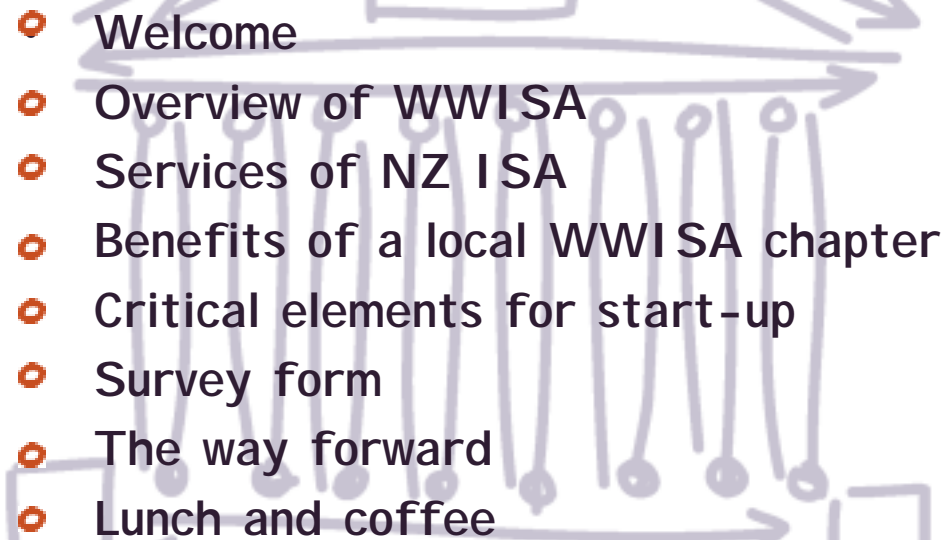




• [www.wwisa.org](http://www.wwisa.org) •

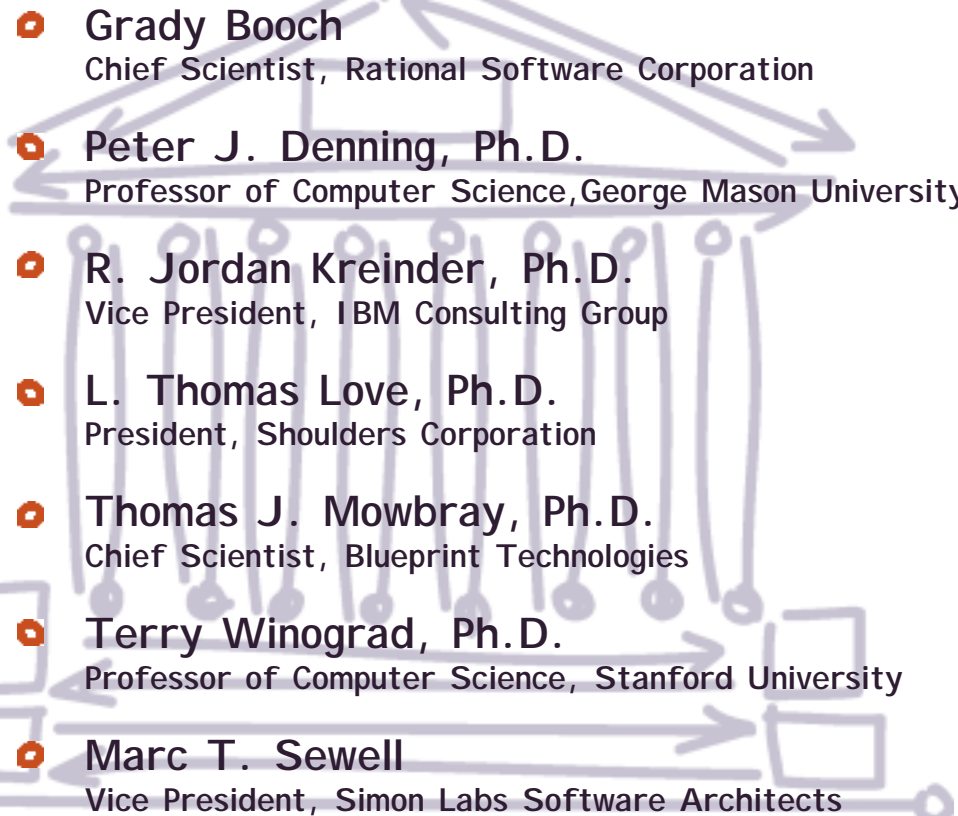
## Agenda

- 
- Welcome
  - Overview of WWISA
  - Services of NZ ISA
  - Benefits of a local WWISA chapter
  - Critical elements for start-up
  - Survey form
  - The way forward
  - Lunch and coffee

## Overview WWISA



## Founders & Advisory Board of Directors

- 
- ◻ Grady Booch  
Chief Scientist, Rational Software Corporation
  - ◻ Peter J. Denning, Ph.D.  
Professor of Computer Science, George Mason University
  - ◻ R. Jordan Kreinder, Ph.D.  
Vice President, IBM Consulting Group
  - ◻ L. Thomas Love, Ph.D.  
President, Shoulders Corporation
  - ◻ Thomas J. Mowbray, Ph.D.  
Chief Scientist, Blueprint Technologies
  - ◻ Terry Winograd, Ph.D.  
Professor of Computer Science, Stanford University
  - ◻ Marc T. Sewell  
Vice President, Simon Labs Software Architects



## Founding Members

**Scott McGregor** ◻ Experience Designer, PlaceWare, Inc.      **Victoria V. Livschitz** ◻ Software Architect, Sun Microsystems

**Francis G. Mosse** ◻ President, High-Tech Systems, Inc.      **Vernon L. Riley** ◻ Software Architect, Technosys

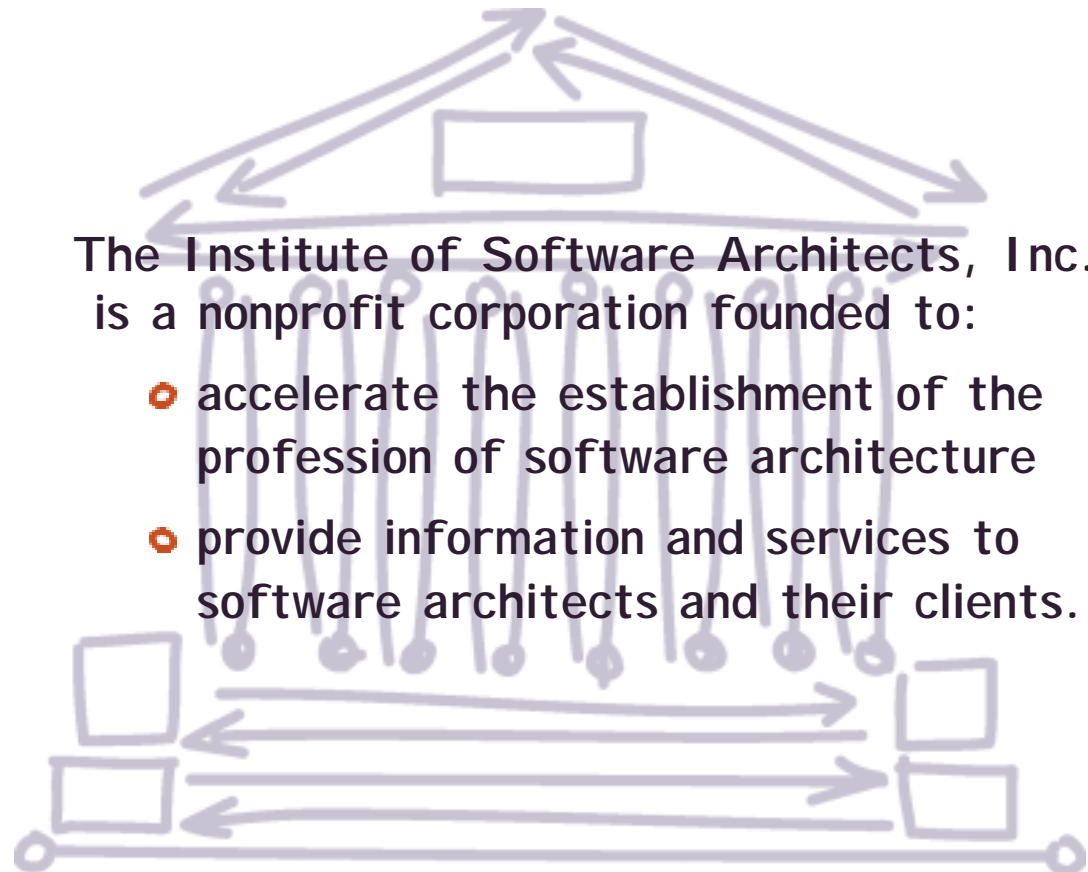
**Steve Ornburn** ◻ Consultant, Ornburn Consulting      **Gerard G. Meszaros** ◻ Chief Architect, Clearstream Consulting

**Richard E. Moore** ◻ Consultant, Objective Business Solutions, Inc.      **Paul C. Brown, Ph.D.** ◻ Software Architect, Independent Consultant

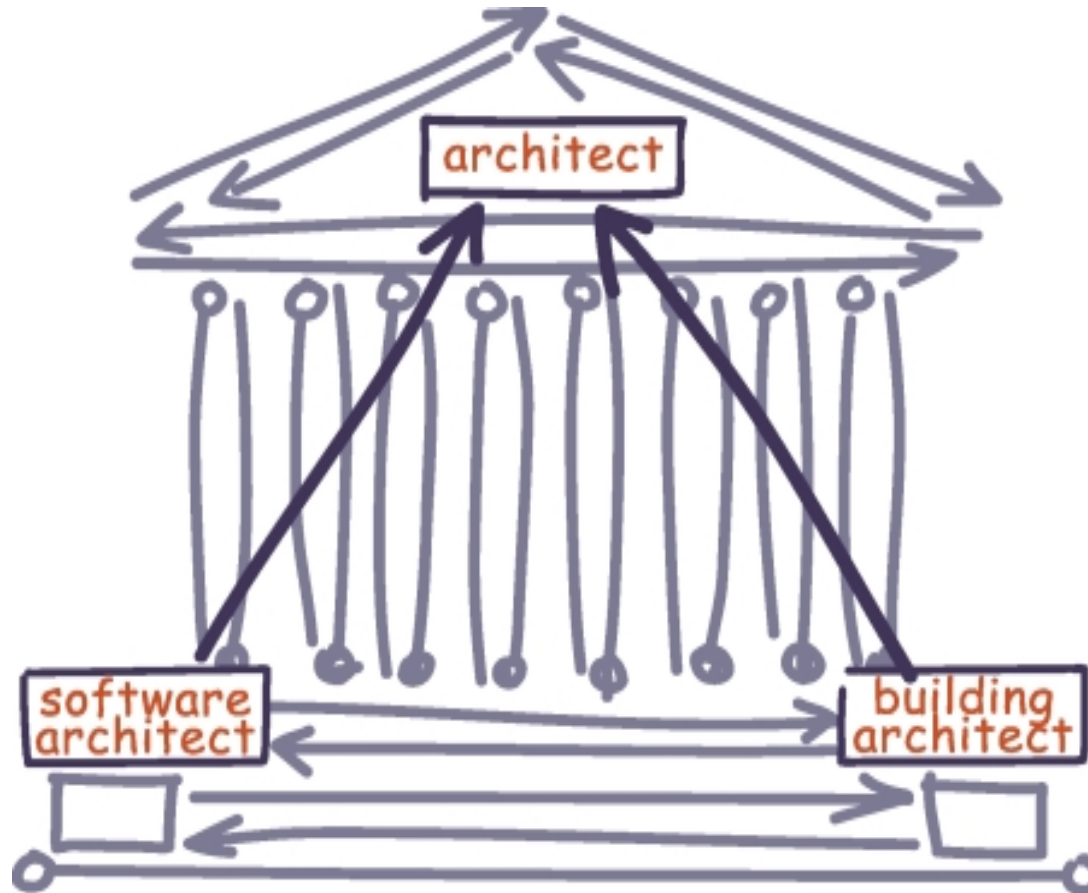
**John R. Bentley** ◻ Software Architect, Sprint      **Raphael C. Malveaux** ◻ Chief Scientist/Architect, Eidea Labs

**Richard Helm, Ph.D.** ◻ Chief Architect, IBM Australia

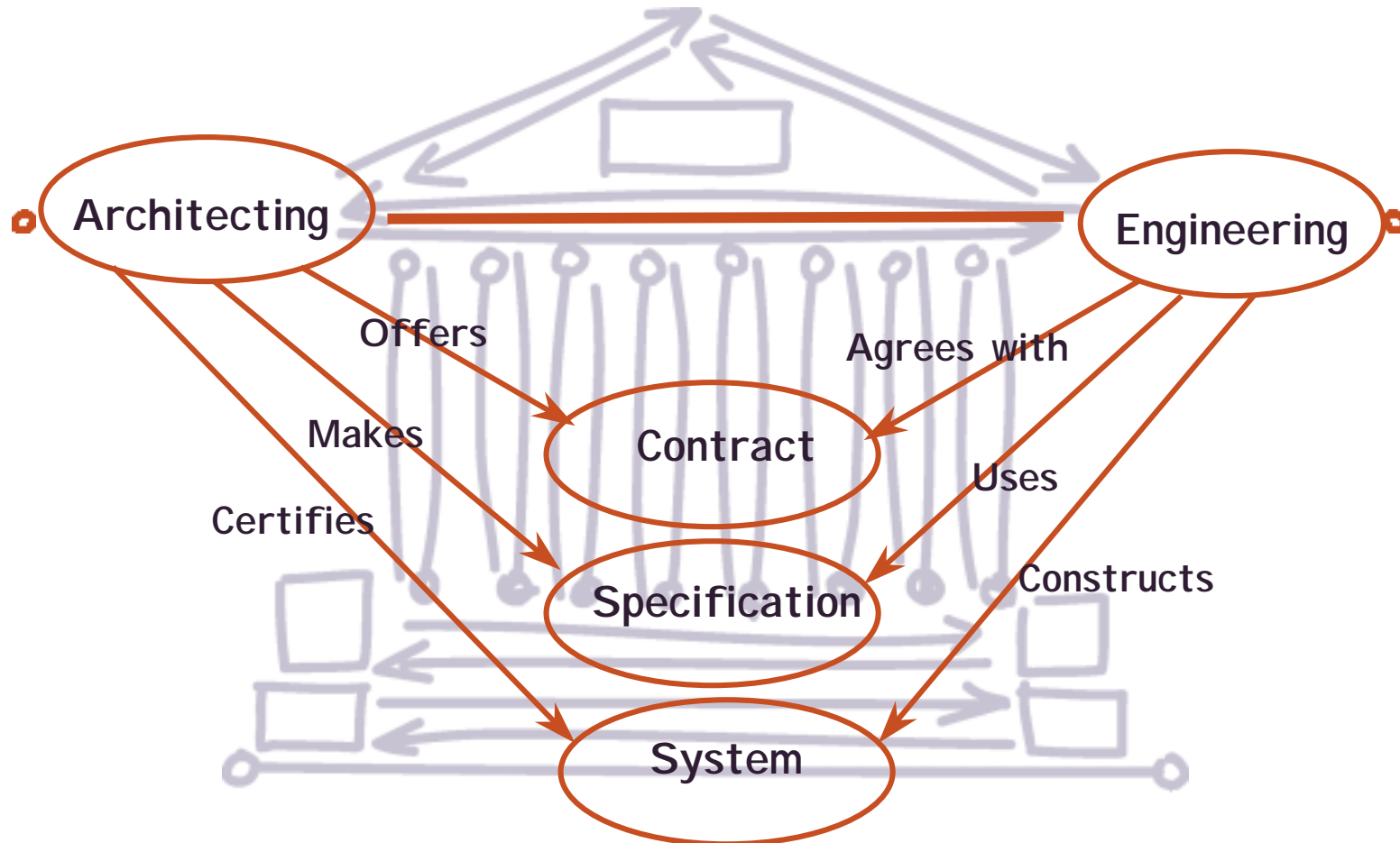
## Mission



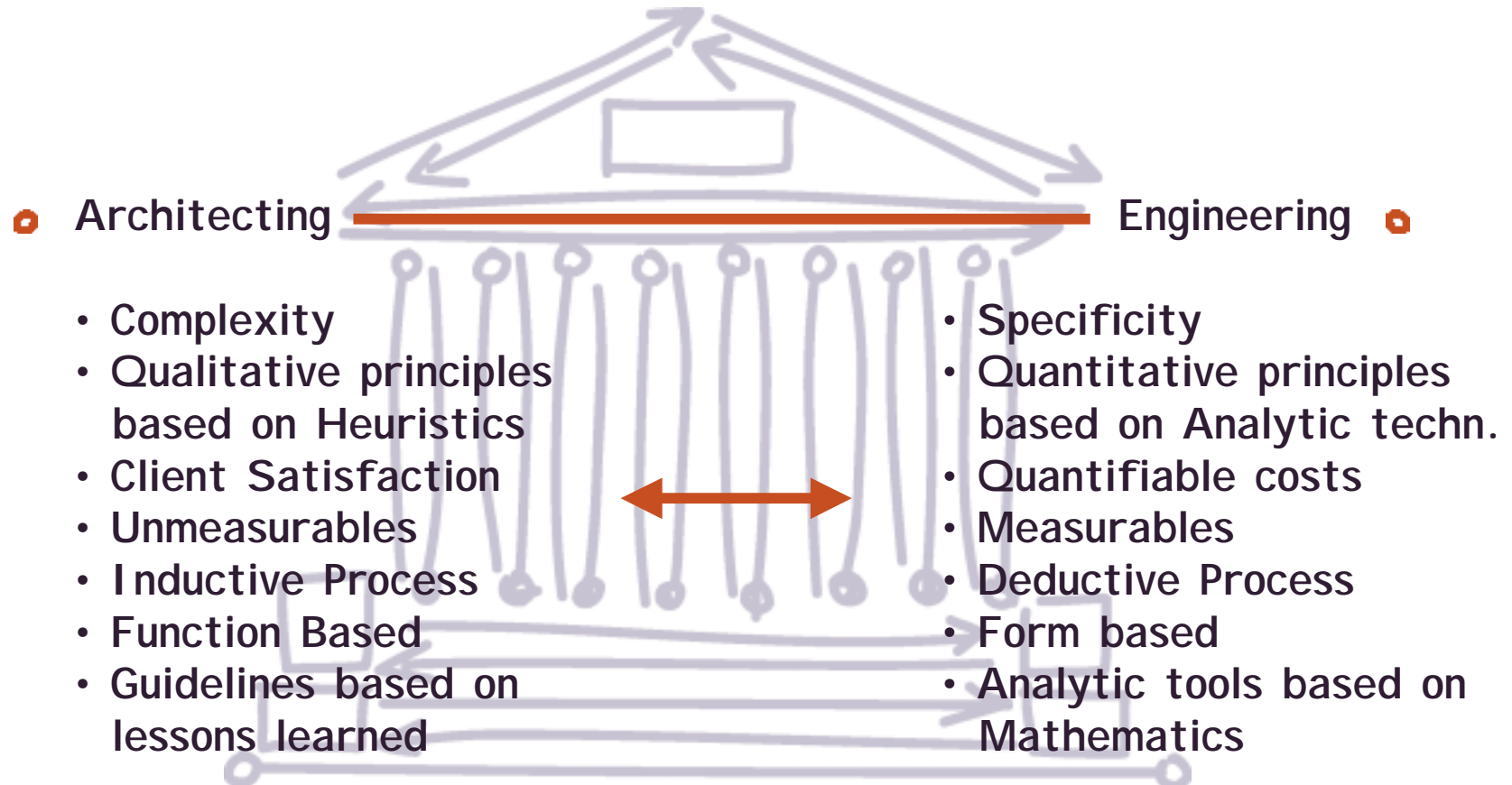
# Philosophy



## "Architecting" versus "Engineering" (1)

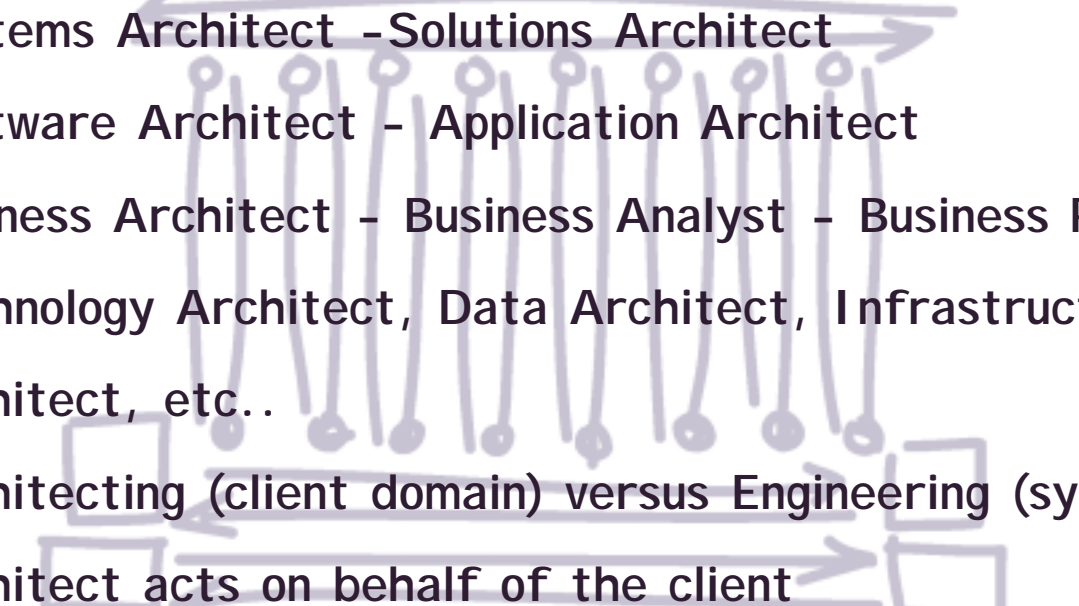


## "Architecting" versus "Engineering" (2)





## Terminology

- 
- Systems Architect - Solutions Architect
  - Software Architect - Application Architect
  - Business Architect - Business Analyst - Business Process Eng.
  - Technology Architect, Data Architect, Infrastructure Architect, etc..
  - Architecting (client domain) versus Engineering (system domain)
  - Architect acts on behalf of the client

## Services of NZ ISA (1)

Provide:

- Primary point of contact and mailing address
- News on software architecture
- Consolidated source of architectural information
- Information and links to other WWISA chapters
- Membership information
- Copy of approved bylaws
- Description of the Chapter's geographic area
- List of organisations in the area

## Services of NZ ISA (2)

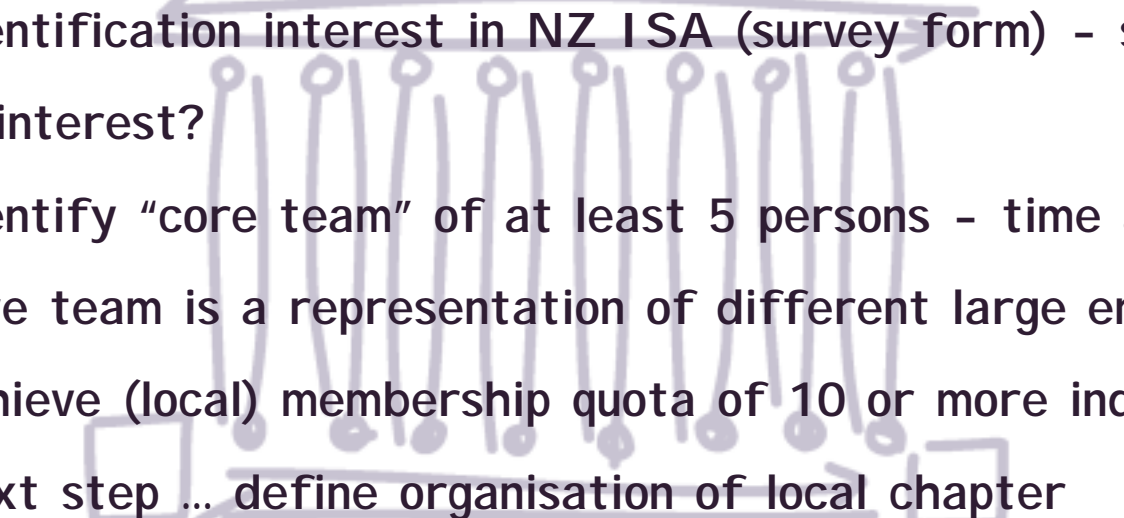
Provide:

- Overview of NZ ISA members
- Overview of events
- Access to discussion groups
- Company information (sponsors) and contact details
- Meeting information (minutes, subjects, next meeting, etc..)
- Code of ethical behaviour
- ...

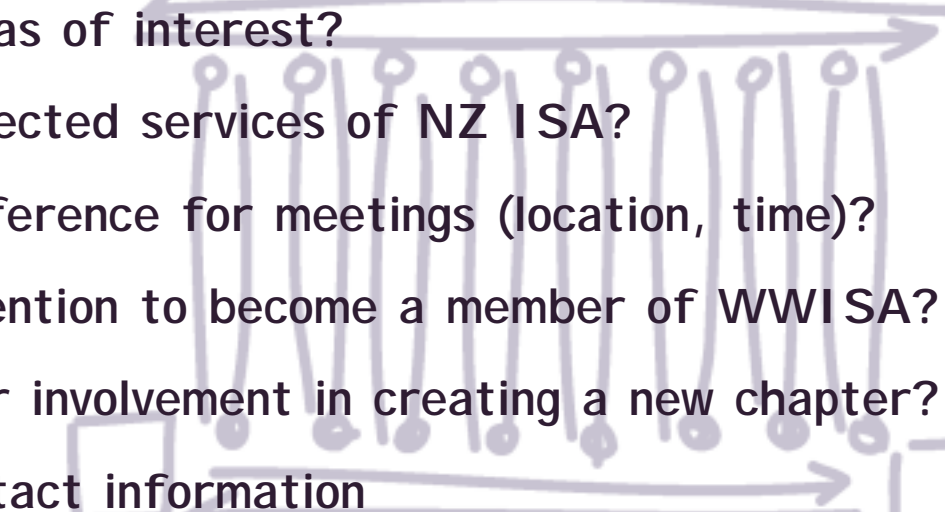
## Benefits of NZ ISA

- 
- Focussed on our local market
  - Professional support:  
Education, tools, publications, research, product marketing
  - Professional identity and verification in local market
  - Talent pool (local)
  - The client

## Critical elements for start-up

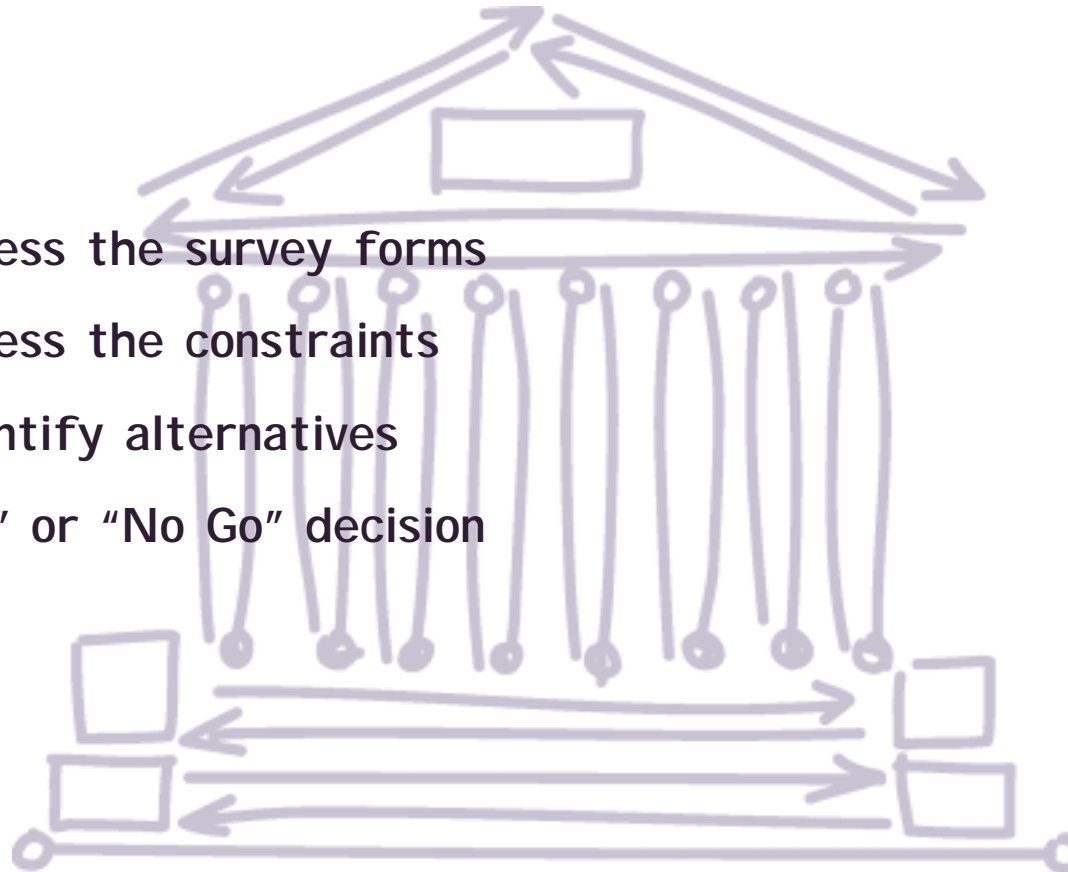
- 
- Identification interest in NZ ISA (survey form) - same areas of interest?
  - Identify "core team" of at least 5 persons - time and effort?
  - Core team is a representation of different large employers?
  - Achieve (local) membership quota of 10 or more individuals?
  - Next step ... define organisation of local chapter

## Survey form

- 
- Areas of interest?
  - Expected services of NZ ISA?
  - Preference for meetings (location, time)?
  - Intention to become a member of WWISA?
  - Your involvement in creating a new chapter?
  - Contact information

## The way forward

- Assess the survey forms
- Assess the constraints
- Identify alternatives
- "Go" or "No Go" decision





• [www.wwisa.org](http://www.wwisa.org) •